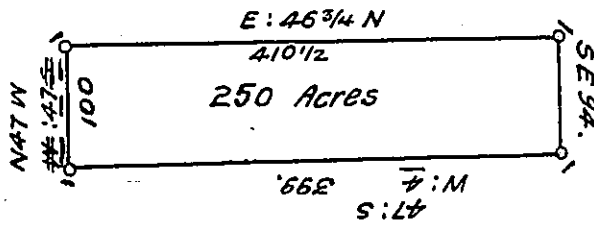


Robert Evans



Robert Evans Land beginning at a Stak in the Line of Edward ffoulks Land from thence East 46³/₄ degrees North 410¹/₂ Perch to a Corner Stak Set in y^e Ground being in Joseph ffishers Line thence by y^e Same North East: 94 Perches to another Stak being a Corner of Hugh Griffiths Land from thence by a Line of Marked trees and y^e Same Land West 47 degrees South 399 Perches to another Corner Stak for Hugh Griffiths Land in a Line of Ellis David's Land thence by y^e same North 47: West 100 Perches to y^e first place of begin = Containing Reasurveyd y^e 25: 5th m^o 1702

D. Powell

IN TESTIMONY that the above is a copy of the original remaining on file in the Department of Internal Affairs of Pennsylvania, made conformably to an Act of Assembly approved the 16th day of February, 1833, I have hereunto set my Hand and caused the Seal of said Department to be affixed at Harrisburg; this thirteenth day of January 1910

Hurray Howell
Secretary of Internal Affairs.